

Activity ID	Activity Name	Original Duration	Remaining Duration	Start	Finish	Total Float	2011			
							Sep	Oct	Nov	Dec
Reclamation in NPR3 ver.9.5 2011_11_21		115	23	21-Jul-11 A	19-Dec-11	-39				
Landside		115	23	05-Aug-11 A	19-Dec-11	-39				
	Installation Seawall Blocks to B6 and B7	55	0	13-Aug-11 A	18-Oct-11 A					
	Construct the Concrete Coping at B6 and B7	82	0	13-Aug-11 A	07-Nov-11 A					
	Laying Geotextile & Filter Material	86	0	05-Aug-11 A	14-Nov-11 A					
	Construct Open Channel U under IEC	33	0	23-Sep-11 A	30-Oct-11 A					
	Construct Open Channel U outside IEC	32	20	30-Sep-11 A	15-Dec-11	-36				
	Construct the Drainage Pipeline at West of Open Channel U	34	0	30-Sep-11 A	31-Oct-11 A					
	Construct the Drainage Pipeline at East of Open Channel U	28	17	01-Nov-11 A	15-Dec-11	-31				
	Unloading Sorted Public Fill behind new seawall	53	0	15-Aug-11 A	20-Nov-11 A					
	Reclamation	98	23	13-Aug-11 A	19-Dec-11	-39				
Seaside		100	23	21-Jul-11 A	19-Dec-11	-39				
	Construction of Outlet Pipe from City Garden	54	20	12-Oct-11 A	19-Dec-11	-34				
	Construction of B8	13	13	15-Nov-11 A	09-Dec-11	-31				

█ Actual Work
 █ Critical Remaining Work
 Summary
█ Remaining Work
 ◆ Milestone

Contract No. HK/2009/01

Contract Title : Wan Chai Development Phase II - Central - Wan Chai Bypass at HKCEC

Working Programme for Marine Works (Dredging and Backfilling)

ACTIVITY	START	FINISH	2010												2011												2012												2013																							
			Feb	Mar	Apr	May	Jun	Jul	Aug	Sep	Oct	Nov	Dec	Jan	Feb	Mar	Apr	May	Jun	Jul	Aug	Sep	Oct	Nov	Dec	Jan	Feb	Mar	Apr	May	Jun	Jul	Aug	Sep	Oct	Nov	Dec	Jan	Feb	Mar	Apr	May	Jun	Jul	Aug	Sep	Oct	Nov	Dec													
Submissions before Works Commencement																																																														
Submit silt curtain deployment plan	31/3/10	31/3/10	◆																																																											
Submit silt screen deployment plan	31/3/10	31/3/10	◆																																																											
Submit measures to mitigate noise impact	31/3/10	31/3/10	◆																																																											
Cross Harbour Watermains from WCN to TST (DP6)																																																														
Trench dredging for marine watermains installation	29/4/10	28/10/10	■																																																											
Backfilling for watermain	28/1/11	14/12/11													■																																															
Reclamation Works at HKCEC Water Channel (DP3)																																																														
Dredging at HKCEC Water Channel (Western Part)	1/6/10	1/8/10	■																																																											
Backfilling to +3.5mPD (Western Part)	17/8/10	6/2/11	■																																																											
Dredging at HKCEC Water Channel (Middle Part)	2/8/10	6/1/11	■																																																											
Backfilling to +3.5mPD (Middle Part)	21/2/11	1/6/11													■																																															
Dredging at HKCEC Water Channel (Eastern Part)	1/12/12	31/12/12																																					■																							
Backfilling to +3.5mPD (Eastern Part)	16/1/13	30/4/13																																																	■											




**Dredging & Reclamation Works Programme Summary
(based on Initial Works Programme Rev. 0)**

ID	Task Name	Duration	Start	Timeline																
				2010	2011	2012	2013	2014	2015											
				Q4	Q1	Q2	Q3	Q4	Q1	Q2	Q3	Q4	Q1	Q2	Q3	Q4	Q1	Q2	Q3	Q4
1	HK/2009/02-Marine & Reclamation Works	2008 d	Thu 28/1/10	[Summary bar from Q4 2009 to Q4 2015]																
2	Contract Commencement	0 d	Thu 28/1/10	[Milestone diamond at start of Q4 2009]																
3	General	1879 d	Mon 22/2/10	[Summary bar from Q1 2010 to Q4 2015]																
4	Submission & obtain approval for marine GI	21 d	Mon 22/2/10	[Task bar in Q1 2010]																
5	Stage 1 Marine GI for reclamation	30 d	Mon 15/3/10	[Task bar in Q1 2010]																
6	Engineer's Design review for Dredging of WCR1, WCR2 & WCR4	30 d	Mon 22/3/10	[Task bar in Q1 2010]																
7	Relocation of New Star Ferry Pier	0 d	Tue 18/3/14	[Milestone diamond in Q3 2014]																
8	Demolition of Existing Star Ferry Pier	100 d	Tue 18/3/14	[Task bar in Q3 2014]																
9	Stage 2 Marine GI for Reclamation	14 d	Tue 18/3/14	[Task bar in Q3 2014]																
10	Engineer's Design review for Dredging of WCR3	21 d	Tue 25/3/14	[Task bar in Q3 2014]																
11	Complete Diversion of Hung Hing Road Traffic Back to Original	20 d	Fri 6/2/15	[Task bar in Q2 2015]																
12	Excavate & remove top of d-wall for permanent seawall construction	50 d	Wed 25/2/15	[Task bar in Q2 2015]																
13	Submarine Outfall	500 d	Tue 21/9/10	[Summary bar from Q3 2010 to Q4 2011]																
14	Dredging, Laying and Backfilling of Submarine Outfall Pipe at Sea	500 d	Tue 21/9/10	[Task bar from Q3 2010 to Q4 2011]																
15	Phase 1 - WCR1	158 d	Wed 21/4/10	[Summary bar from Q1 2010 to Q4 2010]																
16	Mobilization of plants	1 d	Wed 21/4/10	[Task bar in Q1 2010]																
17	Seabed dredging	63 d	Wed 21/4/10	[Task bar in Q1 2010]																
18	Bedding Filling and Permanent seawall (precast cassion)	60 d	Tue 22/6/10	[Task bar in Q2 2010]																
19	Bulk reclamation	37 d	Fri 20/8/10	[Task bar in Q2 2010]																
20	Phase 2 - WCR2	149 d	Thu 1/3/12	[Summary bar from Q3 2011 to Q4 2012]																
21	Mobilization of plants	1 d	Thu 1/3/12	[Task bar in Q3 2011]																
22	Temp seawall and Seabed dredging	77 d	Thu 1/3/12	[Task bar in Q3 2011]																
23	Bulk reclamation	73 d	Wed 16/5/12	[Task bar in Q4 2011]																
24	Phase 3 - TWCR4 & WCR4	98 d	Sat 28/4/12	[Summary bar from Q4 2011 to Q4 2012]																
25	Mobilization of plants	1 d	Sat 28/4/12	[Task bar in Q4 2011]																
26	Temp Seawall and Seabed dredging	75 d	Sat 28/4/12	[Task bar in Q4 2011]																
27	Bulk & temp reclamation	24 d	Wed 11/7/12	[Task bar in Q3 2012]																
28	Phase 4 - WCR3	294 d	Tue 18/3/14	[Summary bar from Q3 2013 to Q4 2014]																
29	Mobilization of plants	1 d	Tue 18/3/14	[Task bar in Q3 2013]																
30	Seabed dredging for Permanent Seawall	112 d	Tue 18/3/14	[Task bar in Q3 2013]																
31	Backfill and permanent seawall (precast cassion)	108 d	Tue 8/7/14	[Task bar in Q4 2013]																
32	Bulk reclamation	74 d	Fri 24/10/14	[Task bar in Q4 2013]																
33	Phase 5 - Construct Permanent Seawall Blocks along curved coastline & Remove TWCR4	105 d	Wed 15/4/15	[Summary bar from Q4 2014 to Q4 2015]																
34	Mobilization of plants	1 d	Wed 15/4/15	[Task bar in Q4 2014]																
35	Dredging and Filling for permanent seawall construction	50 d	Wed 15/4/15	[Task bar in Q4 2014]																
36	Construction of Permanent Seawall Blocks for curved coastline	56 d	Wed 3/6/15	[Task bar in Q1 2015]																
37	Remove temp seawall and reinstate the location of TWCR4	30 d	Mon 29/6/15	[Task bar in Q1 2015]																

Project: Reclamation Works Programme
Date: Tue 9/3/10

Task		Summary		Rolled Up Progress		Project Summary	
Progress		Rolled Up Task		Split		Group By Summary	
Milestone		Rolled Up Milestone		External Tasks		Deadline	

Activity ID	Cal ID	Activity Description	Orig Dur	Early Start	Early Finish	Year																
						2010	2011	2012	2013	2014	2015	2016	2017									
TCBR1E (TS1 Area)																						
105	1	TCBR1E(TS1)-dredging+rockfill(pre. for seawall)	86	03DEC10*	26FEB11																	
110	1	TCBR1E (TS1)-temporary reclamation	69	28JAN11*	06APR11																	
155	1	TCBR1E (TS1)- removal of temporary reclamation	27	30JAN12*	25FEB12																	
TCBR4																						
100	1	Maintenance dredging for navigation safety for	7	20NOV10*	26NOV10																	
TCBR2 + TCBR3 (TS2 Area)																						
115	1	TCBR2&TCBR3(TS2)- Maintenance dredging for	5	15NOV10*	19NOV10																	
117	1	TCBR2&TCBR3(TS2)-dredge+rockfill seabed	64	16DEC11*	17FEB12																	
120	1	TCBR2&TCBR3(TS2) --temporary reclamation	115	26FEB12*	19JUN12																	
160	1	TCBR2&TCBR3(TS2-removal temporary reclamation	57	18AUG13*	13OCT13																	
TCBR1W (TS4 Area)																						
125	1	TCBR1W(TS4)-dredging+rockfill(pre. for seawall)	40	19DEC10*	27JAN11																	
130	1	TCBR1W(TS4) --temporary reclamation	68	28JAN11	05APR11																	
165	1	TCBR1W(TS4)--removal temporary reclamation	26	27OCT13*	21NOV13																	
TPCWAE																						
135	1	TPCWAE-dredging+rockfill(pre. for seawall)	55	03DEC10*	26JAN11																	
140	1	TPCWAE --temporary reclamation	77	27JAN11	13APR11																	
170	1	TPCWAE--removal temporary reclamation	28	28SEP13*	25OCT13																	
TPCWAW																						
145	1	TPCWAW-dredging+rockfill(pre. for seawall)	47	28OCT13*	13DEC13																	
150	1	TPCWAW --temporary reclamation	83	14DEC13	06MAR14																	
175	1	TPCWAW--removal temporary reclamation	50	02JUL15*	20AUG15																	

 Early Bar
 Progress Bar
 Critical Activity

?Primavera Systems, Inc.

EP02 CHINA STATE CONSTRUCTION ENGG LTD Sheet 1 of 1

CONTRACT NO. HY/2009/15: CENTRAL WAN CHAI BYPASS- TUNNEL (CBTS SECTION)

Prepared based on IWP Rev. 0
Date Prepared: 28 Oct 2010

Act ID	Description	Orig Dur	Early Start	Early Finish	2011												2012												2013					
					JAN	FEB	MAR	APR	MAY	JUN	JUL	AUG	SEP	OCT	NOV	DEC	JAN	FEB	MAR	APR	MAY	JUN	JUL	AUG	SEP	OCT	NOV	DEC	JAN	FEB	MAR			
Section I																																		
Contract Obligation																																		
1000	Commencement of Section I of works	0	20JAN11 *		◆ Commencement of Section I of works																													
Initial Works																																		
1050	Apply Marine notice to Marine Department	30	21JAN11	19FEB11	■ Apply Marine notice to Marine Department (dredg)																													
1060	Apply Marine notice to Marine Dept. Piling	30	18FEB11	19MAR11	■ Apply Marine notice to Marine Dept. Piling																													
1080	Apply FEP under EP356/2009	21	28FEB11	20MAR11	■ Apply FEP under EP356/2009																													
1081	Submission of Works Schedule for FEP	14	05MAR11	21MAR11	■ Submission of Works Schedule for FEP																													
1082	Submission of Location Plan for FEP	14	05MAR11	21MAR11	■ Submission of Location Plan for FEP																													
1083	Submission of Silt Curtain Deployment	14	05MAR11	21MAR11	■ Submission of Silt Curtain Deployment Plan																													
1084	Submission of Silt Screen Deployment Plan	14	05MAR11	21MAR11	■ Submission of Silt Screen Deployment Plan																													
1085	Submission Noise Management Plan	14	05MAR11	21MAR11	■ Submission Noise Management Plan																													
1090	Apply Dumping Permit	30	18FEB11	19MAR11	■ Apply Dumping Permit																													
1100	Apply CNP	30	31JAN11	01MAR11	■ Apply CNP																													
1110	Apply C&D waste disposal	30	20JAN11	18FEB11	■ Apply C&D waste disposal																													
1120	Apply Discharge licence	30	18FEB11	19MAR11	■ Apply Discharge licence																													
1130	Notification of chemical waste Producer	30	20JAN11	18FEB11	■ Notification of chemical waste Producer																													
1140	Notification to Labor Dept-Works Commencement	30	20JAN11	18FEB11	■ Notification to Labor Dept-Works Commencement																													
1150	Submit Risk Ass to MTR	21	28FEB11	20MAR11	■ Submit Risk Ass to MTR																													
1260	Erect Hoarding	30	28FEB11	29MAR11	■ Erect Hoarding																													
1270	Demarcation of Marine Site Boundary	21	01MAR11	21MAR11	■ Demarcation of Marine Site Boundary																													
1280	Working Site Office establishment	14	27JAN11	09FEB11	■ Working Site Office establishment																													
Monitoring																																		
1160	Takeover monitoring system from C1	0	21MAR11 *		◆ Takeover monitoring system from C1																													
1180	Commence Monitoring- ADMS,etc	0	21MAR11		◆ Commence Monitoring- ADMS,etc																													
Dredging Works																																		
1070	Submit Dredging MS	30	18FEB11	19MAR11	■ Submit Dredging MS																													
1075	Acceptance of Dredging MS	0		19MAR11	◆ Acceptance of Dredging MS																													
1078	Initial Hydrographic Survey	1	20MAR11	20MAR11	■ Initial Hydrographic Survey																													
1200	Initial Dredging Works for Piling	15	22MAR11	05APR11	■ Initial Dredging Works for Piling																													
1210	Final Hydrographic survey	3	07MAY12	09MAY12	■ Final Hydrographic survey																													
1220	Final Dredging Works	7	10MAY12	16MAY12	■ Final Dredging Works																													
1230	Confirmation Hydrographic survey	70	17MAY12	25JUL12	■ Confirmation Hydrographic survey																													
Piling Works																																		
1240	Submit stage platform MS	30	10FEB11	11MAR11	■ Submit stage platform MS																													
1250	Submit piling MS	30	10FEB11	11MAR11	■ Submit piling MS																													
P1000	Erect temporary Piling Platform	120	06APR11	03AUG11	■ Erect temporary Piling Platform																													
P1020	Pre-drilling	150	06JUN11	02NOV11	■ Pre-drilling																													
P1040	Bored Piles Construction and Testing	250	06JUL11	11MAR12	■ Bored Piles Construction and Testing																													
P1060	Drive Sheet piles along Bored piles	140	03NOV11	21MAR12	■ Drive Sheet piles along Bored piles																													
P1080	Dismantle Temporary Piling Platform	50	25FEB12	14APR12	■ Dismantle Temporary Piling Platform																													
P1100	Dive sheet piles beyond precast seawall	90	17JAN12	15APR12	■ Dive sheet piles beyond precast seawall																													
P1120	Trim pilehead to cut-off level	210	29SEP11	25APR12	■ Trim pilehead to cut-off level																													
P1140	Cut steel casing of bore piles	210	06OCT11	02MAY12	■ Cut steel casing of bore piles																													
P1160	Cut sheet piles to design level for box units	120	08JAN12	06MAY12	■ Cut sheet piles to design level for box units																													

Start date 20JAN11
 Finish date 19DEC12
 Data date 20JAN11
 Run date 05MAR11
 Page number 1A
 © Primavera Systems, Inc.

Contract no. HK/2010/06
 Wan Chai Development Phase II- Central-Wan Chai By pass over MTR Tsuen Wan Line

GAMMON-LEADER JV

Works Schedule of Marine Works for EP-356/2009

- Early bar
- Progress bar
- Critical bar
- Summary bar
- ◆ Start milestone point
- ◆ Finish milestone point

Activity ID	Activity Name	Rem Dur	Start	Finish	2013																				
					2012					January				February				March				April			
					24	31	07	14	21	28	04	11	18	25	04	11	18	25	01	08	15				
3MRP - Jan 2013 to Apr 2013																									
02 - PRE-CONSTRUCTION WORKS																									
02.2 - Contractor's Submission																									
0220-1360	Tunnel Structures Materials - Submission	12	19-Jul-12 A	31-Jan-13	Tunnel Structures Materials - Submission																				
0220-1370	Tunnel Structures Materials - ER Review/Comment	28	01-Feb-13	28-Feb-13	Tunnel Structures Materials - ER Review/Comment																				
0220-1380	Tunnel Structures Materials - Resubmission	14	01-Mar-13	14-Mar-13	Tunnel Structures Materials - Resubmission																				
0220-1390	Tunnel Structures Materials - ER Approval	21	15-Mar-13	04-Apr-13	Tunnel Structures Materials - ER Approval																				
0220-1500	Bridge Bearing - Procurement & Delivery (D8/D9/D10)	18	24-Sep-12 A	06-Feb-13	Bridge Bearing - Procurement & Delivery (D8/D9/D10)																				
0220-1400	Tunnel Structures Materials - Procurement & Delivery	60	05-Apr-13	03-Jun-13	Tunnel Structures Materials - Procurement & Delivery																				
02.3 - Method Statement / Shop Drawings																									
0230-1280	MS Cut & Cover Tunnel ELS - Resubmission	12	13-Jul-12 A	31-Jan-13	MS Cut & Cover Tunnel ELS - Resubmission																				
0230-1290	MS Cut & Cover Tunnel ELS - ER Approval	12	07-Aug-12 A	12-Feb-13	MS Cut & Cover Tunnel ELS - ER Approval																				
0230-1350	MS Pre-cast Segment Launching - ER Review & Comment	9	20-Sep-12 A	28-Jan-13	MS Pre-cast Segment Launching - ER Review & Comment																				
0230-1360	MS Pre-cast Segment Launching - Resubmission	28	29-Jan-13	25-Feb-13	MS Pre-cast Segment Launching - Resubmission																				
0230-1370	MS Pre-cast Segment Launching - ER Approval	28	26-Feb-13	25-Mar-13	MS Pre-cast Segment Launching - ER Approval																				
0230-1480	MS Stressing Tendons - Resubmission	9	08-Aug-12 A	28-Jan-13	MS Stressing Tendons - Resubmission																				
0230-1490	MS Stressing Tendons - ER Approval	28	29-Jan-13	25-Feb-13	MS Stressing Tendons - ER Approval																				
0230-1580	MS Interim & Permanent Noise Semi Enclosure - Submission	28	04-Mar-13*	31-Mar-13	MS Interim & Permanent Noise Semi Enclosure - Submission																				
0230-1590	MS Interim & Permanent Noise Semi Enclosure - ER Review & Comment	28	01-Apr-13	28-Apr-13	MS Interim & Permanent Noise Semi Enclosure - ER Review & Comment																				
0230-1320	MS Pre-casting Beam - Resubmission	12	03-Dec-12 A	31-Jan-13	MS Pre-casting Beam - Resubmission																				
0230-1330	MS Pre-casting Beam - ER Approval	21	01-Feb-13	21-Feb-13	MS Pre-casting Beam - ER Approval																				
0230-1740	MS Temporary Bridge TB & TC - Submission	28	30-Mar-13	26-Apr-13	MS Temporary Bridge TB & TC - Submission																				
02.4 - Contractor's Design and Build Items																									
0240-1010	Temp Bridge "TA" Design - Prep & Submit	36	16-Dec-11 A	24-Feb-13	Temp Bridge "TA" Design - Prep & Submit																				
0240-1020	Temp Bridge "TA" Design - ER review and comment	28	25-Feb-13	24-Mar-13	Temp Bridge "TA" Design - ER review and comment																				
0240-1030	Temp Bridge "TA" Design - Resubmission	45	25-Mar-13	08-May-13	Temp Bridge "TA" Design - Resubmission																				
0240-1041	Temp Bridge "TD" Design - Submission	28	04-Feb-13*	03-Mar-13	Temp Bridge "TD" Design - Submission																				
0240-1105	Int. Noise Enclosure Structural Design - Submission	60	01-Mar-13*	29-Apr-13	Int. Noise Enclosure Structural Design - Submission																				
0240-1126	Noise Barrier Design Structural Design - Submission	60	01-Mar-13*	29-Apr-13	Noise Barrier Design Structural Design - Submission																				
0240-1150	Perm. Noise Enclosure Structural Design - Submission	60	01-Mar-13	29-Apr-13	Perm. Noise Enclosure Structural Design - Submission																				
0240-1270	Landscaping Design - Submission	90	01-Mar-13*	29-May-13	Landscaping Design - Submission																				
0240-1376	Cut & Cover Tunnel ELS Design - ER Review & Resubmission	7	14-Jun-12 A	26-Jan-13	Cut & Cover Tunnel ELS Design - ER Review & Resubmission																				
0240-1377	Cut & Cover Tunnel ELS Design - ER Approval	15	27-Jan-13	10-Feb-13	Cut & Cover Tunnel ELS Design - ER Approval																				
0240-1379	Cut & Cover Tunnel ELS Fabrication	60	11-Feb-13	11-Apr-13	Cut & Cover Tunnel ELS Fabrication																				
0240-1050	Temp Bridge "TB" & "TC" Design - Prep & Submit	120	01-Mar-13*	28-Jun-13	Temp Bridge "TB" & "TC" Design - Prep & Submit																				
0240-1042	Temp Bridge "TD" Design - ER review and comment	28	04-Mar-13	31-Mar-13	Temp Bridge "TD" Design - ER review and comment																				
0240-1043	Temp Bridge "TD" Design - Resubmission	60	01-Apr-13	30-May-13	Temp Bridge "TD" Design - Resubmission																				
02.5 - Bridge Segment/Beam Off-site Precasting																									
0250-1700.01	Bridge Precast Beam Casting Bridge Beam F5-1	15	14-Jan-13 A	03-Feb-13	Bridge Precast Beam Casting Bridge Beam F5-1																				
0250-1700.02	Bridge Precast Beam Casting Bridge Beam F5-2	9	04-Feb-13	12-Feb-13	Bridge Precast Beam Casting Bridge Beam F5-2																				
0250-1700.03	Bridge Precast Beam Casting Bridge F4 Beam 1-1	6	13-Feb-13	18-Feb-13	Bridge Precast Beam Casting Bridge F4 Beam 1-1																				
0250-1700.04	Bridge Precast Beam Casting Bridge F4 Beam 1-2	6	19-Feb-13	24-Feb-13	Bridge Precast Beam Casting Bridge F4 Beam 1-2																				
0250-1700.005	Bridge Precast Beam Casting Bridge F4 Beam 2-1	6	25-Feb-13	02-Mar-13	Bridge Precast Beam Casting Bridge F4 Beam 2-1																				
0250-1700.06	Bridge Precast Beam Casting Bridge F4 Beam 2-2	6	03-Mar-13	08-Mar-13	Bridge Precast Beam Casting Bridge F4 Beam 2-2																				

- Remaining Level of Effort
- Actual Level of Effort
- Actual Work
- Remaining Work
- Critical Remaining Work
- ◆ Milestone

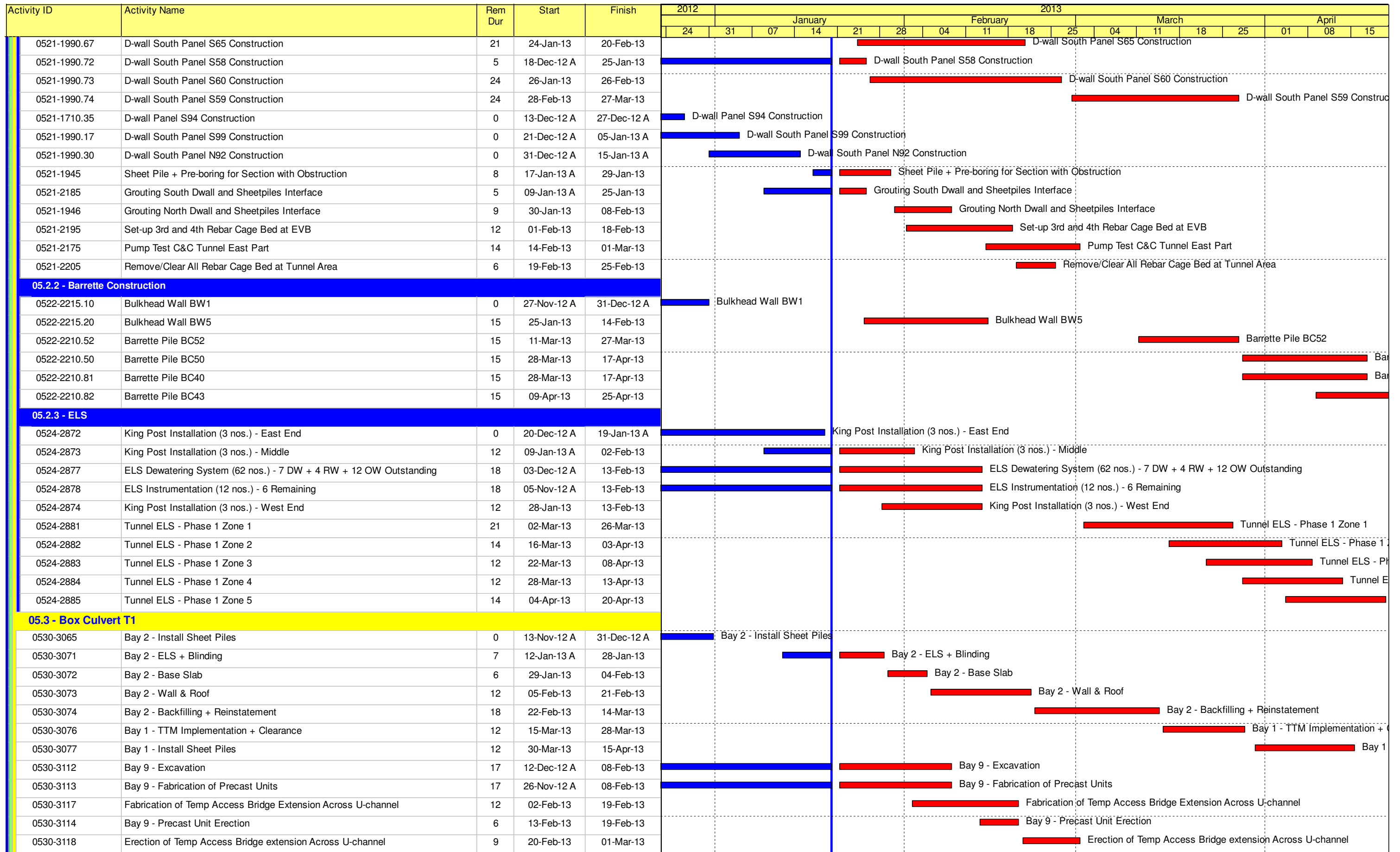
Contract HY/2009/19

Three Month Rolling Programme (20 JAN 2013 to 19 APR 2013)

3MRP

3MRP - Jan 2013 to Apr 2013

Page 1 of 7



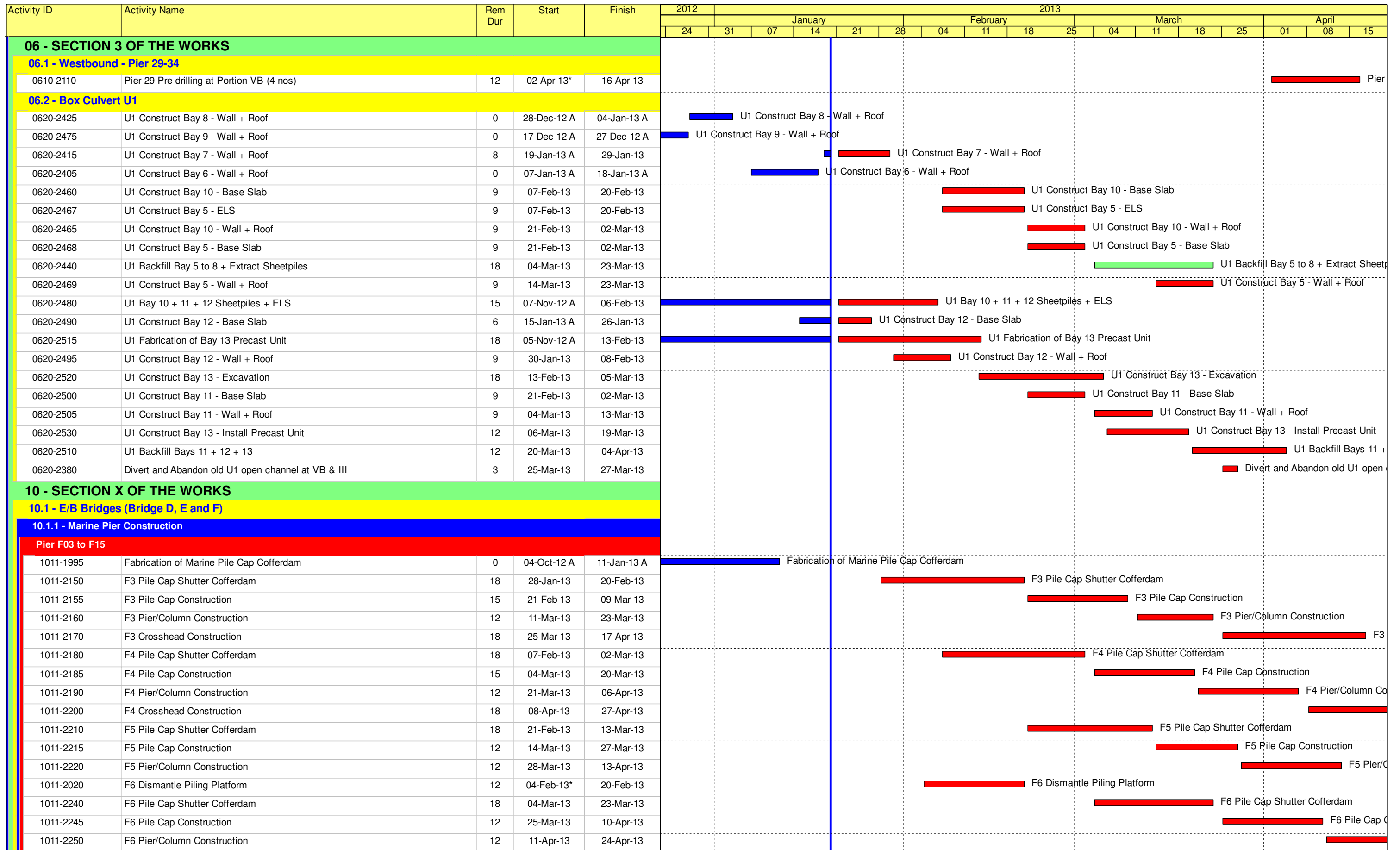
- Remaining Level of Effort
- Actual Level of Effort
- Actual Work
- Remaining Work
- Critical Remaining Work
- ◆ Milestone

Contract HY/2009/19

Three Month Rolling Programme (20 JAN 2013 to 19 APR 2013)

3MRP

3MRP - Jan 2013 to Apr 2013



■ Remaining Level of Effort
■ Actual Level of Effort
■ Actual Work
■ Remaining Work
■ Critical Remaining Work
◆ Milestone

Contract HY/2009/19

Three Month Rolling Programme (20 JAN 2013 to 19 APR 2013)

3MRP

3MRP - Jan 2013 to Apr 2013

Page 4 of 7

Activity ID	Activity Name	Rem Dur	Start	Finish	2012	2013															
					January					February				March				April			
					24	31	07	14	21	28	04	11	18	25	04	11	18	25	01	08	15
1011-1910.50	Pier F7 Dolphin Socketed H-Pile 4	0	19-Nov-12 A	31-Dec-12 A	█																
1011-1910.60	Pier F7 Dolphin Socketed H-Pile 6	0	19-Nov-12 A	28-Dec-12 A	█																
1011-2030	F7 Dismantle Piling Platform	12	14-Feb-13	27-Feb-13																	
1011-2270	F7 Pile Cap Shutter Cofferdam	18	14-Mar-13	06-Apr-13																	
1011-2275	F7 Pile Cap Construction	12	08-Apr-13	20-Apr-13																	
1011-2300	F8 Pile Cap Shutter Cofferdam	18	25-Mar-13	17-Apr-13																	
1011-0802.4	Pier F9 Dolphin Socketed H-Pile P4	0	04-Dec-12 A	10-Jan-13 A	█																
1011-0802.6	Pier F9 Dolphin Socketed H-Pile P6	0	04-Dec-12 A	12-Jan-13 A	█																
1011-2050	Dismantle Piling Platform at Pier F9	12	21-Feb-13	06-Mar-13																	
1011-1970.1	Pier F10 Dolphin Socketed H-Pile P1	0	15-Nov-12 A	03-Jan-13 A	█																
1011-1970.2	Pier F10 Dolphin Socketed H-Pile P2	0	15-Nov-12 A	05-Jan-13 A	█																
1011-1970.3	Pier F10 Dolphin Socketed H-Pile P3	0	15-Nov-12 A	07-Jan-13 A	█																
1011-1970.4	Pier F10 Dolphin Socketed H-Pile P5	0	15-Nov-12 A	11-Jan-13 A	█																
1011-1970.5	Pier F10 Dolphin Socketed H-Pile P4	13	15-Jan-13 A	04-Feb-13																	
1011-1970.6	Pier F10 Dolphin Socketed H-Pile P6	15	15-Jan-13 A	06-Feb-13																	
1011-2060	Dismantle Piling Platform at Pier F10	12	28-Feb-13	13-Mar-13																	
1011-1770.1	Pier F11 Dolphin Socketed H-Pile P1	0	23-Nov-12 A	17-Jan-13 A	█																
1011-1770.2	Pier F11 Dolphin Socketed H-Pile P2	0	23-Nov-12 A	14-Jan-13 A	█																
1011-1770.3	Pier F11 Dolphin Socketed H-Pile P3	0	23-Nov-12 A	15-Jan-13 A	█																
1011-1770.4	Pier F11 Dolphin Socketed H-Pile P5	0	23-Nov-12 A	16-Jan-13 A	█																
1011-1770.5	Pier F11 Dolphin Socketed H-Pile P4	21	26-Jan-13	22-Feb-13																	
1011-1770.6	Pier F11 Dolphin Socketed H-Pile P6	21	26-Jan-13	22-Feb-13																	
1011-2070	Dismantle Piling Platform at Pier F11	12	07-Mar-13	20-Mar-13																	
1011-2350	F11 Pile Cap Construction	18	21-Mar-13	13-Apr-13																	
1011-1822.1	Pier F12 Dolphin Socketed H-Pile P1	5	04-Jan-13 A	25-Jan-13																	
1011-1822.2	Pier F12 Dolphin Socketed H-Pile P2	7	04-Jan-13 A	28-Jan-13																	
1011-1822.3	Pier F12 Dolphin Socketed H-Pile P3	8	04-Jan-13 A	29-Jan-13																	
1011-1822.4	Pier F12 Dolphin Socketed H-Pile P5	10	04-Jan-13 A	31-Jan-13																	
1011-1822.5	Pier F12 Dolphin Socketed H-Pile P4	18	01-Feb-13	25-Feb-13																	
1011-1822.6	Pier F12 Dolphin Socketed H-Pile P6	18	01-Feb-13	25-Feb-13																	
1011-2075	Dismantle Piling Platform at Pier F12	12	14-Mar-13	27-Mar-13																	
1011-1890.50	Pier F13 Dolphin Socketed H-Pile 4	3	31-Dec-12 A	23-Jan-13																	
1011-1890.60	Pier F13 Dolphin Socketed H-Pile 6	5	31-Dec-12 A	25-Jan-13																	
1011-2080	Dismantle Piling Platform at Pier F13	12	21-Mar-13	06-Apr-13																	
1011-2145	Marine bored pile testing F14	0	24-Sep-12 A	31-Dec-12 A	█																
1011-1782.50	Pier F14 Dolphin Socketed H-Pile 4	15	17-Jan-13 A	06-Feb-13																	
1011-1782.60	Pier F14 Dolphin Socketed H-Pile 6	17	17-Jan-13 A	08-Feb-13																	
1011-2085	Dismantle Piling Platform at Pier F14	12	28-Mar-13	13-Apr-13																	
Pier F01 to F02																					
1011-2860	F1A Pile Cap Shutter Cofferdam	3	03-Jan-13 A	23-Jan-13																	
1011-2865	F1A Pile Cap Construction	12	24-Jan-13	06-Feb-13																	
1011-2870	F1A Pier/Column Construction	12	07-Feb-13	23-Feb-13																	
1011-2880	F1A Crosshead Construction	18	25-Feb-13	16-Mar-13																	
1011-2890	F1B Pile Cap Shutter Cofferdam	18	07-Feb-13	02-Mar-13																	

- █ Remaining Level of Effort
- █ Actual Level of Effort
- █ Actual Work
- █ Remaining Work
- █ Critical Remaining Work
- ◆ Milestone

Contract HY/2009/19

Three Month Rolling Programme (20 JAN 2013 to 19 APR 2013)

3MRP

3MRP - Jan 2013 to Apr 2013

Activity ID	Activity Name	Rem Dur	Start	Finish	2012																
					2013																
					January				February				March				April				
24	31	07	14	21	28	04	11	18	25	04	11	18	25	01	08	15					
10.6.1 - Approach Ramp (Excluding Portion IIB)																					
Bored Piles																					
1061-1051	Bored Pile Ramp - BN42	0	10-Dec-12 A	02-Jan-13 A	Bored Pile Ramp - BN42																
1061-1490	Bored Pile Ramp - BN40	0	03-Jan-13 A	12-Jan-13 A	Bored Pile Ramp - BN40																
1061-1500	Bored Pile Ramp - BN41	4	14-Jan-13 A	24-Jan-13	Bored Pile Ramp - BN41																
1061-1510	Bored Pile Ramp - BN44	15	25-Jan-13	14-Feb-13	Bored Pile Ramp - BN44																
1061-1520	Bored Pile Ramp - BN01	15	15-Feb-13	04-Mar-13	Bored Pile Ramp - BN01																
1061-1530	Bored Pile Ramp - BN02	15	05-Mar-13	21-Mar-13	Bored Pile Ramp - BN02																
1061-1540	Bored Pile Ramp - BN03	15	22-Mar-13	11-Apr-13	Bored Pile Ramp - BN03																
1061-1550	Bored Pile Ramp - BN04	15	12-Apr-13	29-Apr-13	Bored Pile Ramp - BN04																

- █ Remaining Level of Effort
- █ Actual Level of Effort
- █ Actual Work
- █ Remaining Work
- █ Critical Remaining Work
- ◆ Milestone

Contract HY/2009/19

Three Month Rolling Programme (20 JAN 2013 to 19 APR 2013)

3MRP

3MRP - Jan 2013 to Apr 2013

Page 7 of 7